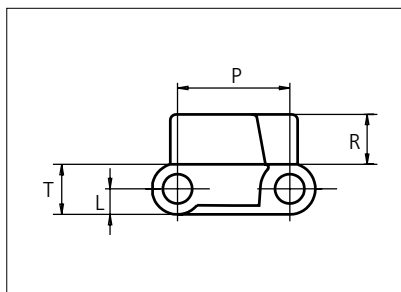


## Plastic Modular Belt

Series **uni Light** Type **Rib**



Straight running belt  
 Nominal pitch: 19.1 mm (0.75 in)  
 Surface type: Rib Top  
 Surface opening: Closed  
 Backflex radius: 50.0 mm (2.0 in)  
 Pin diameter:  $\varnothing$ 5.0 mm (0.20 in)

<b>Recommended Belt material &amp; color</b>	POM-LF <b>G</b>	<b>mm</b>	<b>in</b>	<b>mm</b>	<b>in</b>		
<b>Recommended Pin material &amp; color</b>	PA6.6 <b>N</b>	<b>P (Nominal)</b>	19.1	0.75	<b>T</b>	8.5	0.33
		<b>L</b>	4.3	0.17	<b>R</b>	7.3	0.29

Non standard material and color: See uni Material and Color Overview.

Alternative pin and lock materials: Pin: PE **W** PP **W** PA6.6 **N** **B** PBT **LG** SS304 **W** Lockpin: PBT **LG** PA6.6 **D** **N** PP **W** **B**

Belt width		Permissible tensile force (Belt/pin material)						Belt weight (Belt/pin material)						*Min. No. drive sprocket per shaft	Number of wear strips (Min. No.)	
		POM-LF/PA6.6		PP/PA6.6		PA6/PBT-GR		POM-LF/PA6.6		PP/PA6.6		PA6/PBT-GR			**Carry (pcs)	**Return (pcs)
mm	in	N	lbf	N	lbf	N	lbf	kg/m	lb/ft	kg/m	lb/ft	kg/m	lb/ft			
77	3.0	789	177	395	89	789	177	0.5	0.35	0.4	0.25	0.4	0.29	2	2	2
153	6.0	1572	353	786	177	1572	353	1.0	0.70	0.7	0.49	0.9	0.58	2	2	2
230	9.0	2355	529	1177	265	2355	529	1.6	1.05	1.1	0.74	1.3	0.86	2	2	2
306	12.1	3138	705	1569	353	3138	705	2.1	1.40	1.5	0.99	1.7	1.15	3	3	2
383	15.1	3921	881	1960	441	3921	881	2.6	1.75	1.8	1.23	2.1	1.44	3	3	2
459	18.1	4704	1057	2352	529	4704	1057	3.1	2.10	2.2	1.48	2.6	1.73	4	4	2
535	21.1	5486	1233	2743	617	5486	1233	3.6	2.45	2.6	1.73	3.0	2.01	4	4	2
612	24.1	6269	1409	3135	705	6269	1409	4.2	2.80	2.9	1.97	3.4	2.30	5	5	3
688	27.1	7052	1585	3526	793	7052	1585	4.7	3.14	3.3	2.22	3.9	2.59	5	5	3
764	30.1	7835	1761	3918	881	7835	1761	5.2	3.49	3.7	2.47	4.3	2.88	6	6	3
841	33.1	8618	1937	4309	969	8618	1937	5.7	3.84	4.0	2.71	4.7	3.16	6	6	3
917	36.1	9401	2113	4700	1057	9401	2113	6.2	4.19	4.4	2.96	5.1	3.45	7	7	4
994	39.1	10184	2289	5092	1145	10184	2289	6.8	4.54	4.8	3.20	5.6	3.74	7	7	4

Additional standard belt widths are available in steps of 76.4 mm (3.01 in.) Additional non-standard belt widths are available in steps of 19.1 mm (0.75 in.)

1910	75.2	19578	4401	9789	2201	19578	4401	13.0	8.73	9.2	6.16	10.7	7.19	13	13	7
------	------	-------	------	------	------	-------	------	------	------	-----	------	------	------	----	----	---

Additional standard belt widths are available in steps of 76.4 mm (3.01 in.) Additional non-standard belt widths are available in steps of 19.1 mm (0.75 in.)

2980	117.3	30545	6867	15273	3433	30545	6867	20.3	13.62	14.3	9.61	16.7	11.22	20	20	10
------	-------	-------	------	-------	------	-------	------	------	-------	------	------	------	-------	----	----	----

General belt tolerance is +0/-0.4% at 23°C/73°F and 50% RH. For exact belt width contact Customer Service. Non standard belt width on request.

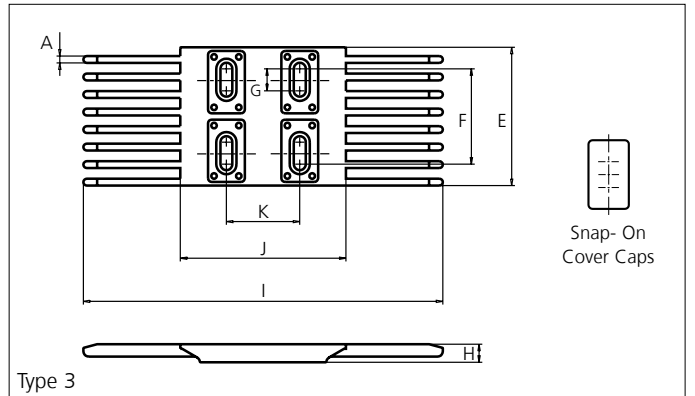
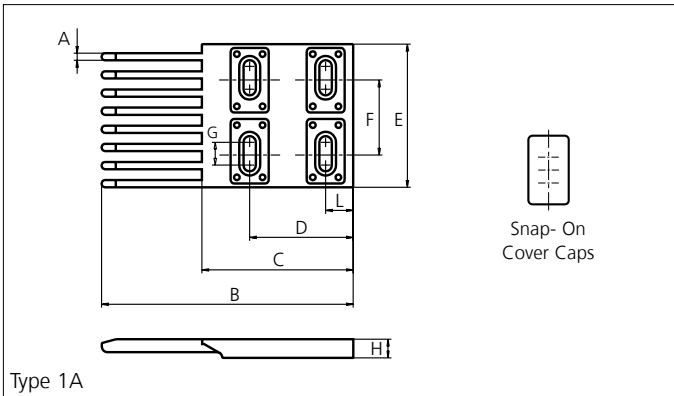
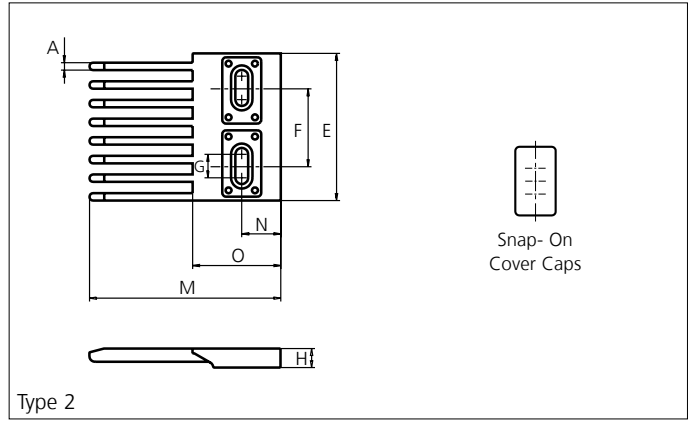
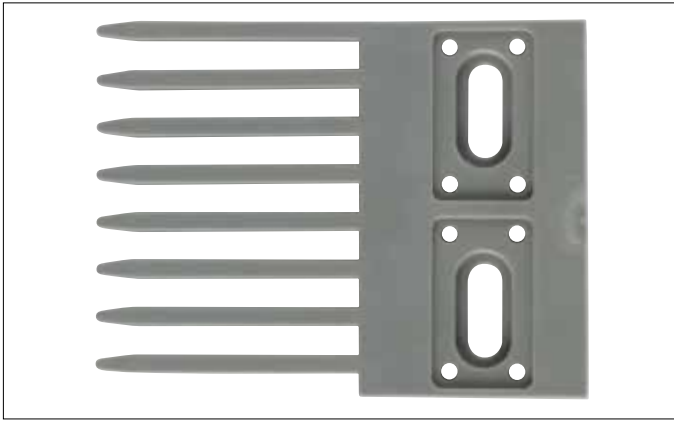
\*Max. Load per Drive Sprocket. Belt material: POM-LF 1250 N (281 lbf), PP 700 N (157 lbf), PA6 1250 N (281 lbf)

\*\*Max. Spacing between wear strips, Carry: 152 mm (6 in.); Return: 304 mm (12 in.)

Any questions? Please contact us.

## Accessories

### Finger Plate



Type	Material & color	A		B		C		D		E		F	
		mm	in	mm	in	mm	in	mm	in	mm	in	mm	in
Single Sided	POM-LF <b>BR</b>	3.8	0.15	132.9	5.23	80.0	3.15	14.9	0.59	75.4	2.97	40.0	1.57
Single Sided	POM-DI <b>G</b>												
Double Sided	POM-EC <b>K</b>												

G		H		I		J		K		L		M		N		O	
mm	in	mm	in	mm	in	mm	in	mm	in	mm	in	mm	in	mm	in	mm	in
12.0	0.47	10.0	0.39	197.1	7.76	90.3	3.56	40.0	1.57	54.5	2.15	98.9	3.89	20.0	0.79	45.2	1.78

All uni-chains belt systems are available in a raised rib version that can be supplied with matching finger plates, also called combs. The finger plates are supplied with cover caps which can be attached when the finger plate has been installed. The cover caps can be removed by using a screwdriver that can be inserted between the cover and finger plate. In order to adjust to belt width variations caused by temperature fluctuations, a slider facilitates the sideways movement of the finger plates.

Non Standard material and color: See uni Material and Color Overview.

Any questions? Please contact us.

**Morskate Aandrijvingen BV**  
Oosterveldsingel 47A  
7558 PJ Hengelo (Ov)  
The Netherlands

NL  
T +31 (0)74 - 760 11 11  
info@morskateaandrijvingen.nl  
www.morskateaandrijvingen.nl

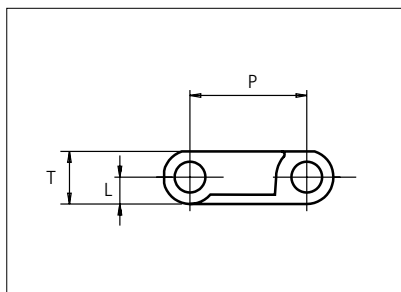
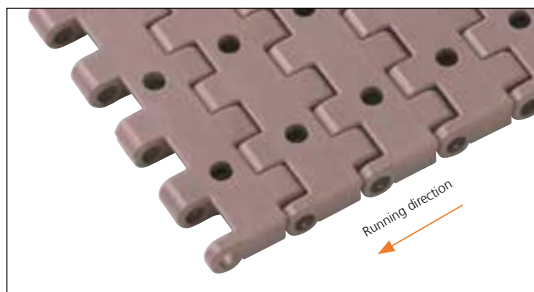
DE  
T +49 692 - 222 34 95  
info@morskateantriebstechnik.de  
www.morskateantriebstechnik.de

EN  
T +31 (0)74 - 760 11 11  
info@morskatedrivetechnology.com  
www.morskatedrivetechnology.com



# Plastic Modular Belt

Series **uni Light** Type **Vacuum**



Straight running belt  
 Nominal pitch: 19.1 mm (0.75 in)  
 Surface type: Flat  
 Surface opening: Closed  
 Backflex radius: 25.0 mm (1.0 in)  
 Pin diameter:  $\varnothing$ 3.9 mm (0.15 in)

Recommended Belt material & color	POM-LF <b>BR</b>	mm	in	mm	in		
		P (Nominal)	19.1	0.75	T	8.5	0.33
Recommended Pin material & color	PA6.6 <b>N</b>	L	4.3	0.17	-	-	-

Non standard material and color: See uni Material and Color Overview.

Alternative pin and lock materials: Pin: PE **W** PP **W** PA6.6 **N** **B** PBT **LG** SS304 PP **W** Lockpin: PBT **LG** PA6.6 **D** **N** PP **W** **B**

Belt width		Permissible tensile force (Belt/pin material)						Belt weight (Belt/pin material)						*Min. No. drive sprocket per shaft	Number of wear strips (Min. No.)	
		POM-LF/PA6.6		PP/PA6.6		PA6/PBT-GR		POM-LF/PA6.6		PP/PA6.6		PA6/PBT-GR			**Carry (pcs)	**Return (pcs)
mm	in	N	lbf	N	lbf	N	lbf	kg/m	lb/ft	kg/m	lb/ft	kg/m	lb/ft			
77	3.0	789	177	395	89	789	177	0.5	0.35	0.4	0.25	0.4	0.29	2	2	2
153	6.0	1572	353	786	177	1572	353	1.0	0.70	0.7	0.49	0.9	0.58	2	2	2
230	9.0	2355	529	1177	265	2355	529	1.6	1.05	1.1	0.74	1.3	0.86	2	2	2
306	12.1	3138	705	1569	353	3138	705	2.1	1.40	1.5	0.99	1.7	1.15	3	3	2
383	15.1	3921	881	1960	441	3921	881	2.6	1.75	1.8	1.23	2.1	1.44	3	3	2
459	18.1	4704	1057	2352	529	4704	1057	3.1	2.10	2.2	1.48	2.6	1.73	4	4	2
535	21.1	5486	1233	2743	617	5486	1233	3.6	2.45	2.6	1.73	3.0	2.01	4	4	2
612	24.1	6269	1409	3135	705	6269	1409	4.2	2.80	2.9	1.97	3.4	2.30	5	5	3
688	27.1	7052	1585	3526	793	7052	1585	4.7	3.14	3.3	2.22	3.9	2.59	5	5	3
764	30.1	7835	1761	3918	881	7835	1761	5.2	3.49	3.7	2.47	4.3	2.88	6	6	3
841	33.1	8618	1937	4309	969	8618	1937	5.7	3.84	4.0	2.71	4.7	3.16	6	6	3
917	36.1	9401	2113	4700	1057	9401	2113	6.2	4.19	4.4	2.96	5.1	3.45	7	7	4
994	39.1	10184	2289	5092	1145	10184	2289	6.8	4.54	4.8	3.20	5.6	3.74	7	7	4

Additional standard belt widths are available in steps of 76.4 mm (3.01 in.) Additional non-standard belt widths are available in steps of 19.1 mm (0.75 in.)

1910	75.2	19578	4401	9789	2201	19578	4401	13.0	8.73	9.2	6.16	10.7	7.19	13	13	7
------	------	-------	------	------	------	-------	------	------	------	-----	------	------	------	----	----	---

Additional standard belt widths are available in steps of 76.4 mm (3.01 in.) Additional non-standard belt widths are available in steps of 19.1 mm (0.75 in.)

2980	117.3	30545	6867	15273	3433	30545	6867	20.3	13.62	14.3	9.61	16.7	11.22	20	20	10
------	-------	-------	------	-------	------	-------	------	------	-------	------	------	------	-------	----	----	----

General belt tolerance is +0/-0.4% at 23°C/73°F and 50% RH. For exact belt width contact Customer Service. Non standard belt width on request.

\*Max. Load per Drive Sprocket. Belt material: POM-LF 1250 N (281 lbf), PP 700 N (157 lbf), PA6 1250 N (281 lbf)

\*\*Max. Spacing between wear strips, Carry: 152 mm (6 in.); Return: 304 mm (12 in.)

Any questions? Please contact us.

**Morskate Aandrijvingen BV**  
 Oosterveldsingel 47A  
 7558 PJ Hengelo (Ov)  
 The Netherlands

NL  
 T +31 (0)74 - 760 11 11  
 info@morskateaanrijvingen.nl  
 www.morskateaanrijvingen.nl

DE  
 T +49 692 - 222 34 95  
 info@morskateantriebstechnik.de  
 www.morskateantriebstechnik.de


EN  
 T +31 (0)74 - 760 11 11  
 info@morskatedrivetechnology.com  
 www.morskatedrivetechnology.com

NON STANDARD

STRAIGHT RUNNING

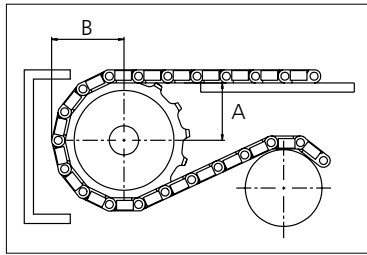
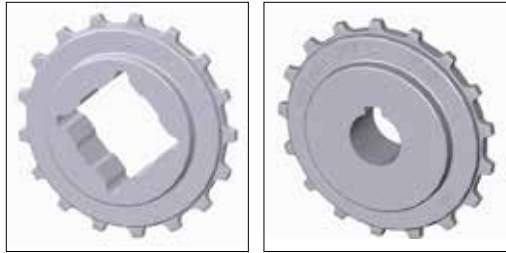
PITCH 19.1 MM/0.75 IN

## Sprocket

No of teeth	Bore size													Overall diameter		Pitch-diameter		Hub-diameter		A-dimension		B-dimension		Single row/Two way	Double row/Two way	Molded PA6 LG	Machined PA6 
	Pilot bore	in	0.75	0.78	0.98	1.00	1.18	1.25	1.50	1.57	2.36	2.50	3.54														
	mm	19.1	20.0	25.0	25.4	30.0	31.8	38.1	40.0	60.0	63.5	90.0	mm	in	mm	in	mm	in	mm	in	Molded	Machined					
Z07	x	●	●									42.6	1.68	43.9	1.73	30.0	1.18	15.4	0.61	26.3	1.04	x		x			
Z10	x				●	●						61.7	2.43	61.6	2.43	45.0	1.77	25.0	0.98	35.2	1.39	x		x			
Z17	x			●	●	●	●	■	■			105.0	4.13	103.7	4.08	65.0	2.56	46.6	1.83	56.2	2.21	x		x			
Z24	x				●	●	●	■	■	●		147.2	5.80	146.0	5.75	70.0	2.76	68.0	2.68	77.3	3.04	x		x			
Z25	x					●	●	●	●	■	■	153.3	6.04	152.0	5.98	70.0	2.76	71.0	2.80	80.3	3.16	x		x			

■ Molded sprocket

● Molded sprocket



Other sprocket sizes are available upon request.  
 Two-part sprocket are available upon request.  
 Round bores are always delivered with keyway.  
 Other bore sizes are available upon request.  
 uni Retainer Rings: See uni Retainer Ring data sheet  
 Width of tooth = 4.8 mm (0.19 in)  
 Width of sprocket = 25.0 mm (0.98 in)

Max load per sprocket shown does not take bore size into account.  
 Please also ensure that sufficient size shaft is chosen for corresponding load.

For correct sprocket position: See uni Assembly Instructions for uni Light.  
 For more detailed sprocket information, contact Customer Service.

Non standard material and color: See uni Material and Color Overview.

Any questions? Please contact us.

**Morskate Aandrijvingen BV**

Oosterveldsingel 47A  
 7558 PJ Hengelo (Ov)  
 The Netherlands

**NL**

T +31 (0)74 - 760 11 11  
 info@morskateaandrijvingen.nl  
 www.morskateaandrijvingen.nl

**DE**

T +49 692 - 222 34 95  
 info@morskateantriebstechnik.de  
 www.morskateantriebstechnik.de

**EN**

T +31 (0)74 - 760 11 11  
 info@morskatedrivetechnology.com  
 www.morskatedrivetechnology.com