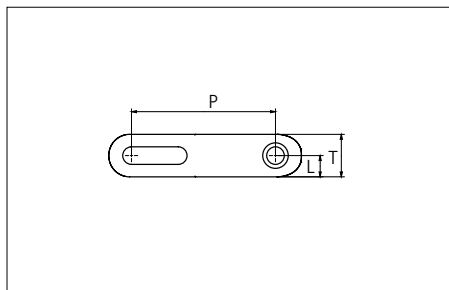
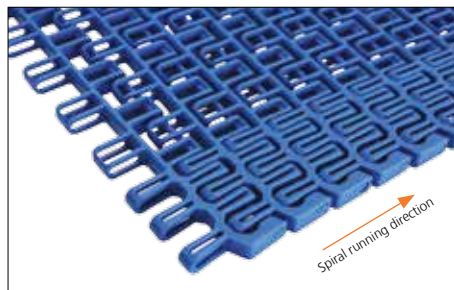


Plastic Modular Belt

Series **uni Flex L-OSB** Type **65% Open Radius 2.5/3.0/3.5/4.0**



Sideflexing belt
 Nominal pitch: 50.8 mm (2.00 in)
 Surface type: Open
 Surface opening: 65%
 Backflex radius: 65.0 mm (2,56 in)
 Pin diameter: 6.0 mm (0.24 in)
 Min. inside radius:
 2.5 / 3.0 / 3.5 / 4.0 x belt width

| | | | | | | | |
|-----------------------------------|----------------|--------------------|------|------|----------|------|------|
| Recommended Belt material & color | POM-D B | | mm | in | | mm | in |
| | | P (Nominal) | 50.8 | 2.00 | T | 15.0 | 0.59 |
| Recommended Pin material & color | PA6.6 B | | | | | | |
| | | L | 7.5 | 0.29 | - | - | - |

Other non standard material and color: See uni Material and Color Overview.
 Alternative pin and lock: Snap Pin A1

| Belt width | | Permissible tensile force (Belt/pin material) | | | | | | | | Belt weight (Belt/pin material) | | | | *Min. No. drive sprocket per shaft | Number of wear strips (Min. No.) | |
|------------|------|---|------|----------------|-----|-------------------|------|----------------|-----|---------------------------------|-------|----------|-------|------------------------------------|----------------------------------|--------------|
| | | POM-D/PA6.6 | | | | PP/PA6.6 | | | | POM-D/PA6.6 | | PP/PA6.6 | | | Carry (pcs) | Return (pcs) |
| | | Straight sections | | Curve sections | | Straight sections | | Curve sections | | kg/m | lb/ft | kg/m | lb/ft | | | |
| mm | in | N | lbf | N | lbf | N | lbf | N | lbf | kg/m | lb/ft | kg/m | lb/ft | | | |
| 326 | 12.8 | 5803 | 1304 | 3300 | 742 | 4368 | 982 | 2080 | 468 | 2.2 | 1.45 | 1.6 | 1.06 | 3 | 2 | 2 |
| 428 | 16.9 | 6864 | 1543 | 3300 | 742 | 5205 | 1170 | 2080 | 468 | 2.8 | 1.91 | 2.1 | 1.39 | 3 | 2 | 2 |
| 530 | 20.9 | 7924 | 1781 | 3300 | 742 | 6041 | 1358 | 2080 | 468 | 3.5 | 2.37 | 2.6 | 1.72 | 4 | 2 | 2 |
| 631 | 24.8 | 8975 | 2018 | 3300 | 742 | 6869 | 1544 | 2080 | 468 | 4.2 | 2.82 | 3.0 | 2.05 | 4 | 3 | 3 |
| 733 | 28.9 | 10036 | 2256 | 3300 | 742 | 7706 | 1732 | 2080 | 468 | 4.9 | 3.27 | 3.5 | 2.38 | 5 | 3 | 3 |
| 834 | 32.8 | 11086 | 2492 | 3300 | 742 | 8534 | 1918 | 2080 | 468 | 5.5 | 3.72 | 4.0 | 2.71 | 5 | 3 | 3 |
| 936 | 36.9 | 12147 | 2731 | 3300 | 742 | 9370 | 2106 | 2080 | 468 | 6.2 | 4.18 | 4.5 | 3.04 | 5 | 3 | 3 |
| 1037 | 40.8 | 13197 | 2967 | 3300 | 742 | 10199 | 2293 | 2080 | 468 | 6.9 | 4.63 | 5.0 | 3.37 | 6 | 4 | 4 |
| 1139 | 44.8 | 14258 | 3205 | 3300 | 742 | 11035 | 2481 | 2080 | 468 | 7.6 | 5.08 | 5.5 | 3.70 | 6 | 4 | 4 |
| 1240 | 48.8 | 15308 | 3441 | 3300 | 742 | 11863 | 2667 | 2080 | 468 | 8.2 | 5.53 | 6.0 | 4.03 | 6 | 4 | 4 |
| 1342 | 52.8 | 16369 | 3680 | 3300 | 742 | 12700 | 2855 | 2080 | 468 | 8.9 | 5.99 | 6.5 | 4.36 | 7 | 5 | 5 |
| 1443 | 56.8 | 17420 | 3916 | 3300 | 742 | 13528 | 3041 | 2080 | 468 | 9.6 | 6.44 | 7.0 | 4.68 | 7 | 5 | 5 |

Additional standard belt widths are available in steps of 101.6 mm (4.00 in). Additional non-standard belt widths are available in steps of 50.8 mm (2.00 in).

General belt tolerance is +0/-0.4% at 23°C/73°F. For exact belt width contact Customer Service. Non standard belt width on request.

*Max. Load per Drive Sprocket. Belt material: POM-D 1000 N (225 lbf), PP 550 N (123 lbf).

Belt needs support rollers or flanged rollers at each belt edge for support.

= Single Link

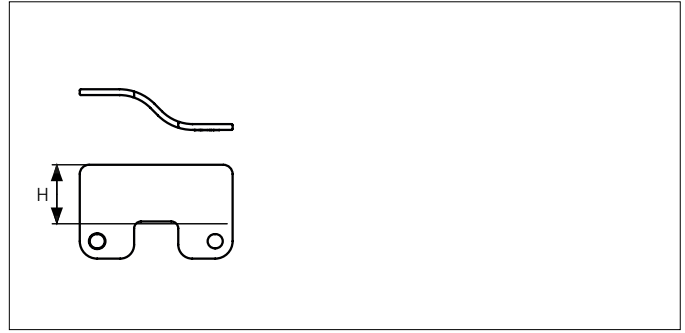
Any questions? Please contact us.

Accessories

Side Guard Outside Only



Side Guard Outside Only



| Type | Recommended Material & color | H | |
|-------------------------|------------------------------|------|------|
| | | mm | in |
| Side Guard Outside Only | POM-D B | 25.4 | 1.00 |

* Min. indent for Side Guard is: 80.0 mm (3.15 in) and Increment 25.4 mm (1.00 in)
 Non Standard material and color: See uni Material and Color Overview.

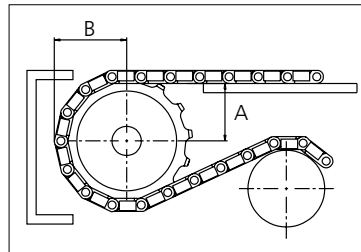
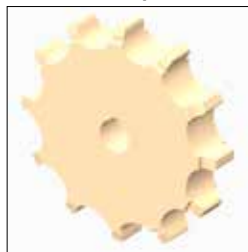
Sprocket

| No. of teeth | Bore size | | | | | | | | | | | | Overall diameter | Pitch diameter | Hub diameter | Dimension A | Dimension B | Single row/Two way | Double row/Two way | Machined | | | | | | |
|--------------|------------|------|------|------|------|------|------|------|------|------|------|------|------------------|----------------|--------------|-------------|-------------|--------------------|--------------------|----------|----------|--------|-------|--|--|---|
| | Pilot Bore | | | | | | | | | | | | | | | | | | | Molded | Machined | | | | | |
| | in | 0.75 | 0.79 | 0.98 | 1.00 | 1.18 | 1.25 | 1.50 | 1.57 | 2.36 | 2.50 | 3.54 | | | | | | | | mm | in | PA6 LG | PA6 N | | | |
| Z08 | x | | | | ● | ● | | | ● | | | | 134.6 | 5.30 | 131.5 | 5.18 | 107.6 | 4.23 | 54.4 | 2.15 | 74.9 | 2.95 | x | | | x |
| Z10 | x | | | | ● | ● | ● | | ● | | | | 168.3 | 6.63 | 164 | 6.46 | 141.3 | 5.56 | 71.4 | 2.81 | 90.8 | 3.57 | x | | | x |
| Z12 | x | | | | ● | | ● | ● | ● | ● | | ■ | 203.5 | 8.01 | 196.5 | 7.74 | 176.5 | 6.94 | 88.2 | 3.47 | 106.8 | 4.20 | x | | | x |
| Z15 | x | | | | ● | | ● | ● | ● | ● | | ■ | 253.4 | 9.98 | 245.4 | 9.66 | 226.4 | 8.91 | 113.2 | 4.46 | 131.0 | 5.16 | x | | | x |

■ Machined sprocket



● Machined sprocket



Non standard material and color: See uni Material and Color Overview.

Other sprocket sizes are available upon request
 Two-part sprocket are available upon request
 Other bore sizes are available upon request
 uni Retainer Rings: See uni Retainer Ring data sheet
 Width of tooth = 30.0 mm (1.18 in)
 Width of sprocket = 40.0 mm (1.57 in)

Max. load per sprocket shown does not take bore size into account.
 Please also ensure that sufficient size shaft is chosen for corresponding load.

For correct sprocket position: See uni Assembly Instructions for uni Flex L-OSB.
 For more detailed sprocket information, contact Customer Service.

uni Flex L-OSB 65% Open NON STANDARD/150407

Any questions? Please contact us.

Morskate Aandrijvingen BV

Oosterveldsingel 47A
 7558 PJ Hengelo (Ov)
 The Netherlands

NL

T +31 (0)74 - 760 11 11
 info@morskateaanrijvingen.nl
 www.morskateaanrijvingen.nl

DE

T +49 692 - 222 34 95
 info@morskateantriebstechnik.de
 www.morskateantriebstechnik.de

EN

T +31 (0)74 - 760 11 11
 info@morskatedrivetechnology.com
 www.morskatedrivetechnology.com